

# Stormwater Pollution Prevention Plan

*Ocean Township  
Monmouth County  
NJG0150592*

*Annual Review Date: August 9, 2024*

*Stormwater Program Coordinator: Stephen Higgins*

Signature: \_\_\_\_\_



Date: \_\_\_\_\_

*5-29-25*

## Table of Contents

<b>Form 1 – Team Members .....</b>	<b>3</b>
<b>Form 2 – Revision History .....</b>	<b>4</b>
<b>Form 3 – Public Announcements.....</b>	<b>5</b>
<b>Form 4 – Post-Construction Stormwater Management in New Development and Redevelopment ...</b>	<b>6</b>
<b>Form 5 – Ordinances .....</b>	<b>8</b>
<b>Form 6 – Street Sweeping.....</b>	<b>9</b>
<b>Form 7 – MS4 Infrastructure .....</b>	<b>11</b>
<b>Form 8 – Community-wide Measures.....</b>	<b>21</b>
<b>Form 9 – Municipal Maintenance Yards &amp; Other Ancillary Operations .....</b>	<b>22</b>
<b>Form 11 – MS4 Mapping .....</b>	<b>43</b>
<b>Form 12 – Watershed Improvement Plan .....</b>	<b>44</b>

## Form 1 – Team Members

<b>Stormwater Program Coordinator (SPC)</b>			
Name and Title		<i>Stephen Higgins Director of Public Works</i>	
Phone	<i>(732) 531-5001 x 3360</i>	Email	<i>shiggins@oceantwp.org</i>
<b>Individual(s) Responsible for Major Development Project Stormwater Management Review</b>			
Name and Title		<i>Bennett Matlack, P.E. Planning Board Engineer/Zoning Board of Adjustment Engineer</i>	
Phone	<i>(732) 462-7400</i>	Email	<i>bmatlack@cmeusa1.com</i>
Name and Title		<i>Greg Blash, P.E. Township Engineer</i>	
	<i>(732) 922-9229</i>	Email	<i>gblash@leonsavakian.com</i>
<b>Other Municipal Stormwater Team Members</b>			
Name and Title		<i>David G. Brown Director of Community Development</i>	
Phone	<i>(732) 531-5000 x3310</i>	Email	<i>dbrown@oceantwp.org</i>
Name and Title		<i>Jessie M. Joseph Township Clerk</i>	
Phone	<i>(732) 531-5000 x3321</i>	Email	<i>joseph@oceantwp.org</i>
Name and Title		<i>Steven Sexton Code Enforcement Officer</i>	
Phone	<i>(732) 531-5000 x3383</i>	Email	<i>ssexton@oceantwp.org</i>
<b>Shared/Contracted Service Providers</b>			
Provider Name	Service Provided	Term of Service	
<i>Monmouth County</i>	<i>Vehicle Washing</i>	<i>Renewed Annually</i>	
<i>Deal Lake Commission</i>	<i>Public Education and Outreach</i>	<i>Renewed Annually</i>	

**Form 2 – Revision History**

Revision Date	Form # Changed	Reason for Revision (Updates to staff, policy, webpage, etc.)
6/6/2024	4	<i>Stormwater Control Ordinance</i>
05/29/2025	1, 3, 5-11	<i>Notice of Violation Compliance Actions</i>



### Form 3 – Public Announcements

#### Part IV.B. and C.

1. Provide the link to the dedicated stormwater webpage for your municipality.
<i><a href="https://www.oceantwp.org/p/stormwater-management-information">https://www.oceantwp.org/p/stormwater-management-information</a></i>
2. List the name and title of person(s) responsible for stormwater webpage postings/updates.
<i>Tracey Berkowitz, Director of Administrative Services</i>
3. List the newspapers, social media outlets, websites, direct mailings (Email or postal), and other communication approaches typically used to inform/educate the public on stormwater program information and related events/activities.
<i>Public education and outreach events are posted on the Township of Ocean website at <a href="http://www.oceantwp.org">www.oceantwp.org</a> and on the Deal Lake Commission website at <a href="https://deallake.org">https://deallake.org</a>. Additional stormwater related information is broadcast on Ocean TV - Cablevision channel 77 and Verizon FiOS channel 22.</i>

## Form 4 – Post-Construction Stormwater Management in New Development and Redevelopment

### Part IV.E.

1.	How does the municipality define “major development”? If it is different from the definition in N.J.A.C. 7:8, explain the difference.
	<p><i>As per Ocean Township stormwater control ordinance #2346, modified under ordinance #2469, “Major development” means an individual “development,” as well as multiple developments that individually or collectively result in:</i></p> <ol style="list-style-type: none"> <li><i>1. The disturbance of one or more acres of land since February 2, 2004;</i></li> <li><i>2. The creation of one-quarter acre or more of regulated impervious surface since February 2, 2004;</i></li> <li><i>3. The creation of one-quarter acre or more of regulated motor vehicle surface since March 2, 2021; or</i></li> <li><i>4. A combination of 2 and 3 above that totals an area of one-quarter acre or more. The same surface shall not be counted twice when determining if the combination area equals one-quarter acre or more.</i></li> </ol> <p><i>Major development includes all developments that are part of a common plan of development or sale (for example, phased residential development) that collectively or individually meet any one or more of paragraphs 1, 2, 3, or 4 above. Projects undertaken by any government agency that otherwise meet the definition of “major development” but which do not require approval under the Municipal Land Use Law, N.J.S.A. 40:55D-1 et seq., are also considered “major development”.</i></p>
2.	Is the municipality’s stormwater control ordinance (SCO) the same as or more stringent than NJDEP’s model SCO? If more stringent, explain the difference.
	<p><i>Ocean Township stormwater control ordinance #2346, modified under ordinance #2469, is as exacting as the NJDEP model stormwater control ordinance. Ocean Township has updated the stormwater control ordinance in accordance with State requirements.</i></p>
3.	Describe the process for reviewing major development project applications for compliance with the SCO and Residential Site Improvement Standards (RSIS).
	<p><i>The Planning Board Engineer reviews all major development projects for compliance with the Stormwater Management Rules (N.J.A.C. 7:8) and the Ocean Township Stormwater Control Ordinance and/or the Residential Site Improvement Standards for stormwater management as applicable. If the project is compliant, a recommendation for Approval is made to the Planning Board.</i></p>

4. Does your municipality have a mitigation plan included in your Municipal Stormwater Management Plan and Stormwater Control Ordinance? Indicate the location of records of all variances granted.
<i>Yes, the Ocean Township Municipal Stormwater Management Plan includes a Mitigation Plan and the Ocean Township Stormwater Control Ordinance addresses conditions that must be met to grant a waiver or variance from N.J.A.C. 7:8-5.3. No variances have been granted to date.</i>
5. Indicate the dates of each iteration of the township's Stormwater Control Ordinance, starting with the initial adoption and including revisions.
<i>Stormwater Control Ordinance # 2113, Adopted: January 7, 2009 Stormwater Control Ordinance # 2346, Adopted: December 3, 2020 Stormwater Control Ordinance #2469, Adopted: June 6, 2024</i>
6. Indicate the dates of each iteration of the township's Municipal Stormwater Management Plan, starting with the initial adoption and including revisions.
<i>Ocean Township Municipal Stormwater Management Plan Initial adoption: June 2005 Revised October 2007 and September 2009</i>



## Form 5 – Ordinances

### Part IV.F.1.

Ordinance	Date Adopted	Was the DEP model adopted without change? If not, explain how the municipality's is more stringent.	Entity Responsible for Enforcement	Fees & Fines
1. Pet Waste	11/8/2010	<i>Includes additional disposal requirements for pet waste.</i>	<i>Director of Public Works and/or designee</i>	<i>Up to \$2,000</i>
2. Wildlife Feeding	7/13/2005	<i>Addresses the feeding of migratory and/or wild waterfowl.</i>	<i>Police Dept. and/or Municipal Official</i>	<i>Up to \$2,000</i>
3. Litter Control	7/13/2005	<i>Provides specific regulations for sidewalk sweepings and littering at public places and at private residences.</i>	<i>Code Enforcement Official and/or Municipal Official</i>	<i>Up to \$2,000</i>
4. Improper Disposal of Waste	7/13/2005	<i>Adopted without change</i>	<i>Police Dept. and/or Municipal Official</i>	<i>Up to \$2,000</i>
5. Yard Waste	11/8/2010	<i>Codified within Chapter 10: Regulations for Handling Garbage, Recyclables, Vegetative Waste, and Bulk Trash</i>	<i>Director of Public Works and/or designee</i>	<i>Up to \$2,000</i>
6. Private Storm Drain Inlet Retrofitting	10/18/2010	<i>Adopted without change</i>	<i>Police Dept. and/or Municipal Official</i>	<i>Up to \$2,000/ inlet</i>
7. Illicit Connections	7/13/2005	<i>Adopted without change</i>	<i>Police Dept. and/or Municipal Official</i>	<i>Up to \$2,000</i>
8. Privately-Owned Salt Storage	12/14/2023	<i>Adopted without change</i>	<i>Police Dept. and/or Municipal Official</i>	<i>Up to \$1,000</i>
9. Tree Removal- Replacement	4/14/2022	<i>Also establishes a Shade Tree Fund.</i>	<i>Director of Community Development</i>	<i>Up to \$2,000</i>
<b>List any additional stormwater-related ordinances the municipality has adopted that address issues beyond the scope of the MS4 permit. Include adoption date, entity responsible for enforcement, and related fees and fines.</b>				
<i>Ordinance #2160 – Regulations for Handling Garbage, Recyclables, Vegetative Waste, and Bulk Trash – Adopted 11/8/2010. Enforcement Entity: Director of Public Works or designee. Fees and Fines: Up to \$2,000</i>				
<b>Indicate the location of records associated with ordinances and related violations and enforcement actions below.</b>				
<i>Records associated with ordinances are located in the Township Clerk's office and records related to enforcement actions are located in the Code Enforcement office.</i>				

## Form 6 – Street Sweeping

### *Part IV.F.2.a.i. and ii.*

1. Provide a written description and/or attach a map outlining the sweeping schedule for the following:
  - Segments of municipal roads with storm drain inlets that discharge to surface water (required at least 3 times each year)
  - Segments of municipal roads that do not have storm drain inlets but do discharge to surface water (required at least 1 times each year)

*Note: Only asphalt and concrete roads need to be swept. Roads that do not have storm drain inlets and do not discharge to surface water do not need to be swept.*

*At this time all Township streets that are required to be swept by the 2018 NJPDES permit are swept a minimum of once per month. No street sweeping is conducted during the winter months.*

*The new triannual sweeping schedule will be implemented on or before January 1, 2026 for all municipally owned or operated streets with storm drain inlets that discharge to surface waters. Annual street sweeping will also be implemented on or before January 1, 2026 for all municipally owned or operated streets that do not have storm drain inlets that discharge to surface water.*

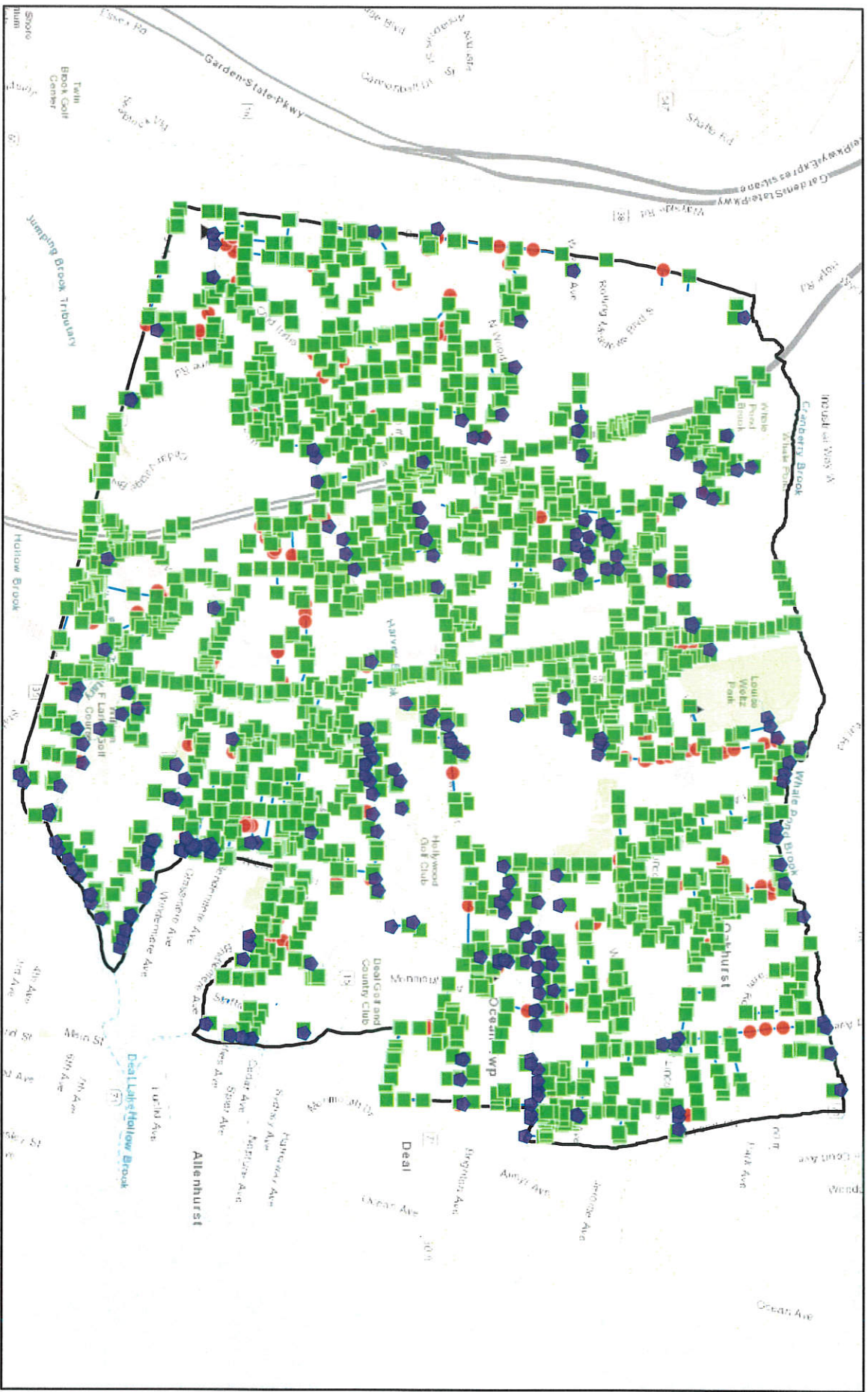
*The Ocean Township Infrastructure map is shown below. Street segments with and without inlets can be identified via the presence or absence of green squares representing inlets.*

2. Indicate if sweeping work is outsourced and if so, describe the arrangement.

*No street sweeping work is outsourced in Ocean Township.*

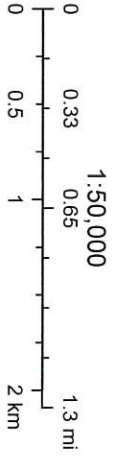


# Ocean Township Infrastructure Map 2024



2/20/2025

- Outfalls
- Manholes
- Pipes
- OT Boundary
- Inlets
- Stormwater facilities



State of New Jersey, Esri, HERE, Garmin, INCREMENT P, USGS, METI/ NASA, EPA, USDA



## Form 7 – MS4 Infrastructure

*Part IV.F.2-4. and Part IV.G.2-3.*

### **1. Municipal Storm Drain Inlets**

- a. Describe how you ensure that municipal inlets without permanent wording cast into the design have been properly labelled.
- b. Describe how you ensure that municipal and private storm drain inlets have been retrofitted.
- c. Describe how you ensure that newly installed storm drain inlets include corresponding catch basins or other BMPs to collect solids.
- d. Describe when and how you conduct inspections of storm drain inlets and the criteria used to determine when they need to be cleaned.

- a. The Ocean Township DPW periodically conducts drive-by inspections of the storm drain inlets in the Township. At the same time, the condition of labelling on storm drain inlets without permanent wording cast into the design is evaluated. Non-permanent storm drain inlet labels found to be missing or damaged are scheduled for repair or replacement.*
- b. As part of the Annual Road Resurfacing Program, municipally owned or operated storm drain inlets are retrofitted or replaced, if needed, when the road is resurfaced to meet the solids and floatable materials control standards in the Ocean Township stormwater control ordinance. Through this effort, all municipally owned or operated catch basins will be retrofitted by 12/31/2027. Ocean Township ordinance #2157 requires that storm drain inlets on private property be retrofitted or replaced to meet the design standard as specified in the ordinance when the roadway is repaved, repaired, resurfaced, reconstructed or altered. This ordinance is enforced through the Township Engineer's Office verifying that new storm drain inlets are designed with BMPs in mind and the Township Police Department.*
- c. As part of the review process the Township Engineer checks the plans submitted for road projects and major development projects to confirm that new storm drain inlets comply with the applicable design standards.*
- d. The Ocean Township DPW periodically conduct drive-by inspections of the municipal storm drain inlets, recording which inlets have been inspected throughout the year to ensure all inlets are inspected at least once per year. If debris is present the grate and surrounding area is cleaned at that time or scheduled for cleaning within one week.*

### **2. Municipal Catch Basins**

- a. Describe when and how you conduct inspections of catch basins.
- b. Describe the criteria used to determine when catch basins need to be cleaned.

- a. The Ocean Township DPW periodically conducts visual inspections of municipal*

*catch basins visually with a flashlight. A minimum of 20% of the catch basins are inspected annually on a rotating schedule such that all catch basins are inspected at least once every 5 years.*

- b. Catch basins that are approximately 50% filled with debris are scheduled for cleaning.*

### **3. Municipal Conveyance System**

Describe when and how inspections of MS4 conveyance systems are conducted, and the criteria used to determine when they need to be cleaned. Include a description of the equipment and techniques used.

*Periodic inspections of the MS4 conveyance system are conducted throughout the year, ensuring a minimum of 20% of the conveyances have been inspected each year. These inspections are often conducted in conjunction with stream scouring inspections. Inspections are completed on all conveyance infrastructure including swales and piping. Observed or reported localized street flooding may also trigger an inspection of the conveyance system. If an obstruction is found the line may be televised and water-jetted to relieve the blockage.*

### **4. Municipal Outfall Inspections – Stream Scouring**

Describe the program in place to detect, investigate, and control localized stream scouring from stormwater outfalls. Include a description of the equipment and techniques used.

*There are 246 municipally owned or operated stormwater outfalls in Ocean Township. Each year at least 20% of the outfalls are inspected for stream scouring. Additionally, the Engineer's Office inspects all outfalls at least once every 5 years. Any problems found are listed as a function of severity and proximity to critical infrastructure. Outfalls with scouring are prioritized for repair or restoration within the constraints of the existing budget and certified annually.*

### **5. Municipal Outfall Inspections – Illicit Discharge Detection and Elimination**

Describe the program in place for conducting visual dry weather inspections of municipally owned or operated outfalls. Include a description of the equipment and techniques used. Record cases of illicit discharges using the DEP's Illicit Connection Inspection Report Form from the Department's main stormwater webpage.

*There are 246 municipally owned or operated stormwater outfalls in Ocean Township. Each year at least 20% of the outfalls are visually inspected for evidence of a dry weather flow, which may indicate an illicit connection. Additionally, the Engineer's office inspects all outfalls at least once every 5 years. If a dry weather flow is confirmed additional physical information is collected and an investigation is*



*conducted. An Illicit Connection Inspection Report Form is completed to assist with the determination of the source of the dry weather flow. Any illicit connections found will be eliminated within 1 year of discovery.*

#### **6. Other Municipal Infrastructure**

List the types of MS4 infrastructure in your town that require inspection but are not noted above in items 1-5. Describe when and how you conduct inspections of this infrastructure and the criteria used to determine when they need to be maintained and/or cleaned.

*The Township of Ocean has implemented a stormwater facility maintenance program to ensure adequate long-term cleaning, operation, and maintenance of all stormwater facilities operated by the Township. Currently Ocean Township operates catch basins, detention basins, and swales.*

*Stormwater facilities other than catch basins are inspected by Ocean Township DPW at the frequency specified in the Operations and Maintenance Manual for the structure or at least 4 times annually. Additionally, the three municipal detention basins are inspected every month by the Township Engineer's office and DPW during their weekly maintenance operations in and around the basins. In high risk areas, preventative maintenance is performed more frequently to ensure that the facility is functioning as designed.*

#### **7. Stormwater Facilities Not Owned or Operated by the Municipality**

Describe your program for ensuring adequate long-term cleaning, operation, and maintenance of stormwater facilities not owned or operated by the municipality. This should include your plan for ensuring annual inspections are being done on these private properties and describe how you record the locations and logs associated with private infrastructure.

*The Township Engineer maintains a list of stormwater facilities not owned or operated by Ocean Township. This list is pasted below as requested by NJDEP. The facilities are inspected annually by the Township Engineer's office. If any deficiencies are found with stormwater facilities not owned or operated by Ocean Township during inspection, a letter will be sent to the facility property owner(s) containing Part IV.F.4 of the NJPDES MS4 Permit, enforcing compliance of the long-term cleaning, operation, and maintenance of the facilities.*

#	Private Stormwater Facility Location
1	Block: 8.01 Lot: 24 6 Tulip Court
2	Block: 182 Lots: 85, 86 1500 Hwy. 35
3	Block: 13 Lots: 17.01, 18.01 Norwood & Jerome
4	Block: 36 Lot 9 Kelly Court
5	Block: 22 Lot: 82 266 Norwood Ave.
6	Block: 140 Lot: 109 731 Highway 35
7	Block: 59, 60 Lot: 1,1 Deal Golf & CC
8	Block: 189 Lot: 11 Block: 182 Lots: 9.01, 9.02, 9.03
9	Block: 38 Lot: 92 111 Bowne Rd.
10	Block: 34.03 Lots: 2 & 2.01 1025 Deal Road
11	Block: 13 Lot: 16 201 Jerome Ave.
12	Block: 13 Lots: 13, 14, 15 2105 Hwy. 35
13	Block: 1.02 Lot: 72 20 Hidden Meadows Dr.
14	Block: 1.02 Lot: 73 1033 West Park Ave.
15	Block: 33.34 Lots: 5 & 6 1705-1709 Hwy. 35

16	Block: 3 Lots 5 & 6 2125 Hwy. 35
17	Block: 141 Lots: 1 & 23 Seaview Square
18	Block: 17 Lot: 39.01 304 Garfield Ave.
19	Block: 216 Lots: 15 & 16 1501 Allen Ave.
20	Block: 9 Lot: 2.01 71 Larchwood Ave.
21	Block: 137 Lots: 28 & 29 911-919 Hwy. 35
22	Block: 137 Lots: 30 & 31 905-909 Hwy. 35
23	Block: 182 Lots 79 & 80 1110 Eagle Ave.
24	Block: 34 Lot: 22 1912 Hwy. 35
25	Block: 187 Lot: 10 3415 Sunset Ave.
26	Block: 44 Lots: 3 & 4 200 Parker Ave.
27	Block: 34 Lot 14 1710 Hwy. 35
28	Block: 3 Lots: 16.03 & 16.04 777 West Park Ave.
29	Block: 189 Lots 6 & 9 1110 Hwy. 35
30	Block: 209 Lot: 14 1115 Hwy. 35

31	Block: 209 Lot 15.01 1119 Hwy. 35
32	Block: 25 Lot: 33 395 Deal Rd.
33	Block: 1.02 Lot: 51.11 Cindy Ln.
34	Block: 182 Lot: 2 1414 Roller Rd.
35	Block: 34 Lot: 16 1800 Hwy. 35
36	Block: 1.02 Lots: 64.01-64.04 929 West Park Ave.
37	Block: 1.02 Lots: 52.01, 53.01 & 54.01 17 Cindy Ln.
38	Block: 3 Lot 17 615 West Park Ave Bldg A
39	Block: 25.27 Lot 10 184 Monmouth Rd.
40	Block: 25.35 Lot: 1.05 269 Whalepond Rd.
41	Block 26.04 Lots: 3 & 41 62 Monmouth Rd.
42	Block: 34 Lots: 3.03 & 5 1602 Hwy. 35
43	Block: 8.02 Lot: 1 4 Old Farm Rd.
44	Block: 26 Lot: 60.01 427 Slocum Pl.



45	Block: 45 Lot: 7 103 Sherman Ave.
46	Block: 23 Lot: 8 203 Grant Ave.
47	Block: 46 Lot: 10 107 Parker Ave.
48	Block: 25.15 Lots: 37.01, 38.01, 42.01 128 Monmouth Road
49	Block: 12.01 Lot 9.01 224 Pinewood Ave.
50	Block: 152 Lot: 1.01 7 Centre St.
51	Block: 8.02 Lots: 3 & 23 47 Larchwood Ave.
52	Block: 184 Lot: 1.02 Block 188 Lot: 1.01 1304-1306 Brielle Ave.
53	Block: 182 Lot: 88 1400 Hwy. 35
54	Block: 142 Lots: 40, 40.01, 46 3602 Sunset Ave. & 1001 Hopewell Ave.
55	Block: 22 Lots: 85 & 85.01 280 Norwood Ave.
56	Block: 176 Lots: 1 & 2 1750 & 1800 Bloomsbury Ave. & 3430 Sunset Ave.
57	Block: 9 Lot 4.01 67 Larchwood Ave.
58	Block: 23 Lot: 24 106 Sherman Ave.
59	Block: 8.02 Lot: 7 49 Old Farm Rd.

60	Block: 9.02 Lot 5: 239 Perrine Ave.
61	Block: 8 Lot: 32 11 Old Farm Rd.
62	Block: 113 Lot: 10 14 Deal Lake Pt. Rd.
63	Block: 22 Lot 74 228 Roosevelt Ave.
64	Block: 45 Lot: 7 103 Sherman Ave.
65	Block: 26.04 Lot: 28.02 11 Abis Pl.
66	Block: 1.20 Lot: 17.01 1104 Green Grove Rd.
67	Block: 33.09 Lot: 1.03 608 West Park Ave.
68	Block: 152 Lot: 2.01 1 Freehold Rd.
69	Block: 9 Lot: 12 201 Park Ave.
70	Block: 141 Lots: 1 & 2 Amazon
71	Block: 9.04 Lots: 7.01 238 Dixon Ave.
72	Block: 124 Lot: 1 1303 S. Wanamassa Dr.
73	Block: 17.01 Lot: 7 103 Adams Ave.
74	Block: 10 Lot: 22.01 12 Saxony Dr.
75	Block 39.04 Lot: 7.02 89 Cold Indian Springs Rd

76	Block: 9 Lots: 6.12 & 7.12 47 & 65 Larchwood Ave.
77	Block: 8.02 Lots: 3 & 23 48 Larchwood Ave.
78	Block: 183 Lot 7 Brielle Ave. Bio-retention basin
79	Block 7 Lot 51 44 Monmouth Road Subsurface Impervious Pave
80	Block 1.09 Lot 1 38 Rolling Meadows Blvd.
81	Block 1.02 Lot 58.01 2 Lotus Ct.
82	Block 1.02 Lot 68 9 Clearview Dr
83	Block 35 Lot 6 West Park Ave. 2 Sandpiper
84	Block 25.15 Lot 37.01 Monmouth Rd.
85	Block 22 Lot 22 300 Roosevelt Ave.
86	Block 22 Lot 107.01 14 Country Club Dr.
87	Block 60.02 Lot 25.02 Bruns Rd.
88	Block 194 Lot 2.01 1549 Hwy. 35
89	Block 175 Lots 38 & 39 Roller Rd.

90	Block 150.01 Lot 1 14 Sequoia Pkwy.
91	Block 37.18 Lot 1 18 Bentley Ln.
92	Block 153 Lot 66.28 4 Maidenstone Dr.
93	Block 12.02 Lot 1 1 Bauer Ave.
94	Block 137 Lot 23 3200 Sunset Ave.

<p><b>8. Infrastructure Records</b></p> <p>Indicate the location of records related to stormwater infrastructure inspection, cleaning, maintenance, and repair activities.</p> <p><i>Records associated with the inspection, cleaning, maintenance, and repair of stormwater infrastructure are kept on file in the Public Works office at 390 Beecroft Place and online through ShareDrive on Township computers.</i></p> <p><i>These records will be kept on file for a minimum of five (5) years.</i></p>
--

## Form 8 – Community-wide Measures

### Part IV.F.2.

<b>1. Herbicide Application Management</b> Describe your program for preventing herbicides from being washed into the waters of the State and to prevent erosion caused by de-vegetation.
<i>Not applicable. The Ocean Township DPW does not spray along roadsides for weed control.</i>
<b>2. Excess Deicing Material Management</b> Describe your program for ensuring that excess salt piles are removed in a timely manner after storm events.
<i>If present, excess salt piles that remain on roadways or in parking areas are removed by the Ocean Township DPW within 3 days after the storm event is over.</i>
<b>3. Roadside Vegetative Waste</b> Describe your program for ensuring proper pickup, handling, storage, and disposal of wood waste and yard trimmings generated by the permittee along municipal roads or on municipal properties (trimming trees, mowing, etc.).
<i>Wood waste and yard trimmings generated by the permittee along municipal roads and on municipal property are disposed of as they are generated.</i>
<b>4. Roadside Erosion Control</b> Describe your program to detect and repair erosion along municipal roadways.
<i>Ocean Township DPW staff look for signs of roadside erosion during the course of normal DPW activities. If roadside erosion is noted corrective measures are taken as soon as possible. Depending on the nature and severity of the erosion vegetative plantings, riprap, or other measures may be implemented to promote soil stabilization.</i>



**Form 9 – Municipal Maintenance Yards & Other Ancillary Operations**  
**Part IV.F.5.**

*Please complete a separate Form 9 for each yard or site. Indicate the number of yards/sites the municipality owns or operates:   7*

<b>1. Site Name and Address</b>	
<i>The Township of Ocean Sunset Garage is located at 3605 Sunset Avenue.</i>	
<b>2. Monthly Site Inspections</b>	
Describe the nature of inspections conducted at this site and the location of inspection logs.	
<i>DPW staff conduct monthly inspections of the entire site to identify conditions that may contribute stormwater contaminants or otherwise negatively impact the MS4. Findings are documented in an inspection log that is kept on-site.</i>	
<b>3. Inventory List</b>	
List all materials and machinery that are potentially exposed to stormwater.	
<b>Materials</b>	<b>Machinery/Equipment</b>
<i>Hydraulic engine oil in closed containers</i>	<i>DPW vehicles</i>
<i>Tires (temporary storage)</i>	<i>Employee vehicles</i>
<i>Paint</i>	<i>Sanitation trucks</i>
<i>Covered salt dome</i>	<i>Oil excavation system</i>
<i>Waste oil tank</i>	
<i>Anti-freeze tank</i>	
<i>Underground fuel tank</i>	
<i>Fuel island</i>	
<b>4. Discharge of Stormwater from Secondary Containment</b>	
Describe the process in place for discharging stormwater from secondary containment areas where outdoor containers are stored.	
<i>Secondary containment areas are visually inspected for any tank leakage before discharge. If a secondary containment area cannot be confirmed to be uncontaminated, the contents are brought off-site for proper disposal.</i>	
<b>5. Fueling Operations</b>	
Does fueling occur on site? If so, describe the BMPs in place to minimize contamination of stormwater from fueling activities. If not, explain where fueling takes place.	
<i>The fuel island has posted instructions for the safe operation of fueling equipment. A spill kit is kept on site in the event of a fuel spill. Any parts of the fueling system found to be leaking are immediately repaired or replaced.</i>	



<p><b>6. Vehicle/Equipment Maintenance and Repair</b> Do you perform maintenance and repair on site? Is this conducted indoors or outdoors? If outdoors, describe the BMPs in place to minimize contamination of stormwater from maintenance and repair activities.</p>
<p><i>Vehicle/equipment maintenance and repair is conducted indoors at the Sunset Garage.</i></p>
<p><b>7. Wash Wastewater Containment</b> Do you wash vehicles on site? If so, describe the BMPs in place to minimize contamination of stormwater from these activities. Note that on site containment structures require annual inspections by a NJ licensed professional engineer. If not, explain where vehicle washing takes place.</p>
<p><i>No vehicle washing is conducted on site. Vehicles are washed at the Monmouth County Reclamation Center Vehicle Wash Facility.</i></p>
<p><b>8. Salt and Other Granular De-icing Materials</b> Do you store salt and other granular deicing materials on site? If so, describe how they are stored and the BMPs in place to minimize contamination of stormwater from these materials. If not, explain where these materials are stored.</p>
<p><i>Salt is stored in a 1,000 ton capacity enclosed salt dome located at the Sunset Garage. DPW employees inspect for spilled salt at the completion of loading and unloading activities. Liquid calcium is stored adjacent to the salt dome in two 1,000 gallon fiberglass tanks with spill containment structures.</i></p>
<p><b>9. Aggregate Material, Wood Chips, and Finished Leaf Compost</b> Do you store these materials on site? If so, describe how they are stored and the BMPs in place to minimize contamination of stormwater from these materials. If not, explain where these materials are stored.</p>
<p><i>Not applicable. No aggregate materials, wood chips, or finished leaf compost are stored at the Sunset Garage.</i></p>
<p><b>10. Cold Patch Asphalt</b> Do you store these materials on site? If so, describe how they are stored and the BMPs in place to minimize contamination of stormwater from these materials. If not, explain where these materials are stored.</p>
<p><i>Not applicable. No cold patch asphalt is stored at the Sunset Garage.</i></p>

<p><b>11. Street Sweepings and Storm Sewer Cleanout Materials</b> Do you store these materials on site? If so, describe how they are stored and the BMPs in place to minimize contamination of stormwater from these materials. If not, explain where these materials are stored.</p>
<p><i>Street sweepings and catch basin clean out materials are collected and disposed of at the Monmouth County Reclamation Center.</i></p>
<p><b>12. Construction and Demolition Waste, Wood Waste, and Yard Trimmings</b> Do you store these materials on site? If so, describe how they are stored and the BMPs in place to minimize contamination of stormwater from these materials. If not, explain where these materials are stored.</p>
<p><i>Not applicable. No construction and demolition waste, wood waste, or yard trimmings are stored at the Sunset Garage.</i></p>
<p><b>13. Scrap Tires</b> Do you store these materials on site? If so, describe how they are stored and the BMPs in place to minimize contamination of stormwater from these materials. If not, explain where these materials are stored.</p>
<p><i>Scrap tires are temporarily stored indoors at the Sunset Garage.</i></p>
<p><b>14. Inoperable Vehicles and Equipment</b> Do you store inoperable vehicles or equipment on site? If so, describe how they are stored and the BMPs in place to minimize contamination of stormwater. If not, explain where they are stored.</p>
<p><i>Inoperable vehicles are temporarily stored indoors at the Public Works Yard. These are stored away from any nearby inlets and are visually inspected to ensure nothing is leaking from the vehicles.</i></p>

<p><b>1. Site Name and Address</b></p>
<p><i>The Township of Ocean Sunset Recycling Facility is located at 3603 Sunset Avenue.</i></p>
<p><b>2. Monthly Site Inspections</b> Describe the nature of inspections conducted at this site and the location of inspection logs.</p>
<p><i>DPW staff conduct monthly inspections of the entire site to identify conditions that may contribute stormwater contaminants or otherwise negatively impact the MS4. Findings are documented in an inspection log that is kept on-site.</i></p>

<b>3. Inventory List</b> List all materials and machinery that are potentially exposed to stormwater.	
<b>Materials</b>	<b>Machinery/Equipment</b>
<i>Recycling containers for resident drop-off</i>	
<b>4. Discharge of Stormwater from Secondary Containment</b> Describe the process in place for discharging stormwater from secondary containment areas where outdoor containers are stored.	
<i>Not applicable. No outdoor containers or secondary containment are kept at the Sunset Recycling Facility.</i>	
<b>5. Fueling Operations</b> Does fueling occur on site? If so, describe the BMPs in place to minimize contamination of stormwater from fueling activities. If not, explain where fueling takes place.	
<i>Not applicable. No fueling operations occur at the Sunset Recycling Facility.</i>	
<b>6. Vehicle/Equipment Maintenance and Repair</b> Do you perform maintenance and repair on site? Is this conducted indoors or outdoors? If outdoors, describe the BMPs in place to minimize contamination of stormwater from maintenance and repair activities.	
<i>Not applicable. No maintenance or repairs are performed at the Sunset Recycling Facility.</i>	
<b>7. Wash Wastewater Containment</b> Do you wash vehicles on site? If so, describe the BMPs in place to minimize contamination of stormwater from these activities. Note that on site containment structures require annual inspections by a NJ licensed professional engineer. If not, explain where vehicle washing takes place.	
<i>Not applicable. No vehicle washing is conducted on site. Vehicles are washed at the Monmouth County Reclamation Center Vehicle Wash Facility.</i>	
<b>8. Salt and Other Granular De-icing Materials</b> Do you store salt and other granular deicing materials on site? If so, describe how they are stored and the BMPs in place to minimize contamination of stormwater from these materials. If not, explain where these materials are stored.	
<i>Not applicable. No salt or other granular deicing materials are stored at the Sunset Recycling Facility.</i>	



<p><b>9. Aggregate Material, Wood Chips, and Finished Leaf Compost</b> Do you store these materials on site? If so, describe how they are stored and the BMPs in place to minimize contamination of stormwater from these materials. If not, explain where these materials are stored.</p>
<p><i>Not applicable. No aggregate materials, wood chips, or finished leaf compost are stored at the Sunset Recycling Facility.</i></p>
<p><b>10. Cold Patch Asphalt</b> Do you store these materials on site? If so, describe how they are stored and the BMPs in place to minimize contamination of stormwater from these materials. If not, explain where these materials are stored.</p>
<p><i>Not applicable. No cold patch asphalt is stored at the Sunset Recycling Facility.</i></p>
<p><b>11. Street Sweepings and Storm Sewer Cleanout Materials</b> Do you store these materials on site? If so, describe how they are stored and the BMPs in place to minimize contamination of stormwater from these materials. If not, explain where these materials are stored.</p>
<p><i>Street sweepings and catch basin clean out materials are collected and disposed of at the Monmouth County Reclamation Center.</i></p>
<p><b>12. Construction and Demolition Waste, Wood Waste, and Yard Trimmings</b> Do you store these materials on site? If so, describe how they are stored and the BMPs in place to minimize contamination of stormwater from these materials. If not, explain where these materials are stored.</p>
<p><i>Not applicable. No construction and demolition waste, wood waste, or yard trimmings are stored at the Sunset Recycling Facility.</i></p>
<p><b>13. Scrap Tires</b> Do you store these materials on site? If so, describe how they are stored and the BMPs in place to minimize contamination of stormwater from these materials. If not, explain where these materials are stored.</p>
<p><i>Not applicable. No scrap tires are stored at the Sunset Recycling Facility.</i></p>
<p><b>14. Inoperable Vehicles and Equipment</b> Do you store inoperable vehicles or equipment on site? If so, describe how they are stored and the BMPs in place to minimize contamination of stormwater. If not, explain where they are stored.</p>
<p><i>Not applicable. No inoperable vehicles or equipment are stored at the Sunset Recycling Facility.</i></p>

<b>1. Site Name and Address</b>	
<i>The Township of Ocean Beecroft Yard is located at 390 Beecroft Place.</i>	
<b>2. Monthly Site Inspections</b>	
Describe the nature of inspections conducted at this site and the location of inspection logs.	
<i>DPW staff conduct monthly inspections of the entire site to identify conditions that may contribute stormwater contaminants or otherwise negatively impact the MS4. Findings are documented in an inspection log that is kept on-site.</i>	
<b>3. Inventory List</b>	
List all materials and machinery that are potentially exposed to stormwater.	
<b>Materials</b>	<b>Machinery/Equipment</b>
<i>Bags of mortar</i>	<i>Salter</i>
	<i>Jet vac truck</i>
	<i>Road sweeper</i>
	<i>Pothole patch truck</i>
	<i>Dump truck</i>
	<i>Loader</i>
	<i>Pickup truck</i>
<b>4. Discharge of Stormwater from Secondary Containment</b>	
Describe the process in place for discharging stormwater from secondary containment areas where outdoor containers are stored.	
<i>Not applicable. No outdoor containers or secondary containment are kept at the Beecroft Yard.</i>	
<b>5. Fueling Operations</b>	
Does fueling occur on site? If so, describe the BMPs in place to minimize contamination of stormwater from fueling activities. If not, explain where fueling takes place.	
<i>Not applicable. No fueling operations occur at the Beecroft Yard.</i>	
<b>6. Vehicle/Equipment Maintenance and Repair</b>	
Do you perform maintenance and repair on site? Is this conducted indoors or outdoors? If outdoors, describe the BMPs in place to minimize contamination of stormwater from maintenance and repair activities.	
<i>Not applicable. No maintenance or repairs are performed at the Beecroft Yard.</i>	

<p><b>7. Wash Wastewater Containment</b> Do you wash vehicles on site? If so, describe the BMPs in place to minimize contamination of stormwater from these activities. Note that on site containment structures require annual inspections by a NJ licensed professional engineer. If not, explain where vehicle washing takes place.</p>
<p><i>Not applicable. No vehicle washing is conducted on site. Vehicles are washed at the Monmouth County Reclamation Center Vehicle Wash Facility.</i></p>
<p><b>8. Salt and Other Granular De-icing Materials</b> Do you store salt and other granular deicing materials on site? If so, describe how they are stored and the BMPs in place to minimize contamination of stormwater from these materials. If not, explain where these materials are stored.</p>
<p><i>Not applicable. No salt or other granular deicing materials are stored at the Beecroft Yard.</i></p>
<p><b>9. Aggregate Material, Wood Chips, and Finished Leaf Compost</b> Do you store these materials on site? If so, describe how they are stored and the BMPs in place to minimize contamination of stormwater from these materials. If not, explain where these materials are stored.</p>
<p><i>Not applicable. No aggregate materials, wood chips, or finished leaf compost are stored at the Beecroft Yard.</i></p>
<p><b>10. Cold Patch Asphalt</b> Do you store these materials on site? If so, describe how they are stored and the BMPs in place to minimize contamination of stormwater from these materials. If not, explain where these materials are stored.</p>
<p><i>Not applicable. No cold patch asphalt is stored at the Beecroft Yard.</i></p>
<p><b>11. Street Sweepings and Storm Sewer Cleanout Materials</b> Do you store these materials on site? If so, describe how they are stored and the BMPs in place to minimize contamination of stormwater from these materials. If not, explain where these materials are stored.</p>
<p><i>Street sweepings and catch basin clean out materials are collected and disposed of at the Monmouth County Reclamation Center.</i></p>



<p><b>12. Construction and Demolition Waste, Wood Waste, and Yard Trimmings</b> Do you store these materials on site? If so, describe how they are stored and the BMPs in place to minimize contamination of stormwater from these materials. If not, explain where these materials are stored.</p> <p><i>Not applicable. No construction and demolition waste, wood waste, or yard trimmings are stored at the Beecroft Yard.</i></p>
<p><b>13. Scrap Tires</b> Do you store these materials on site? If so, describe how they are stored and the BMPs in place to minimize contamination of stormwater from these materials. If not, explain where these materials are stored.</p> <p><i>Not applicable. No scrap tires are stored at the Beecroft Yard.</i></p>
<p><b>14. Inoperable Vehicles and Equipment</b> Do you store inoperable vehicles or equipment on site? If so, describe how they are stored and the BMPs in place to minimize contamination of stormwater. If not, explain where they are stored.</p> <p><i>Not applicable. No inoperable vehicles or equipment are stored at the Beecroft Yard.</i></p>

<p><b>1. Site Name and Address</b></p> <p><i>The Township of Ocean Compost Facility is located on Deal Testsite Road in Joe Palaia Park.</i></p>															
<p><b>2. Monthly Site Inspections</b> Describe the nature of inspections conducted at this site and the location of inspection logs.</p> <p><i>DPW staff conduct monthly inspections of the entire site to identify conditions that may contribute stormwater contaminants or otherwise negatively impact the MS4. Findings are documented in an inspection log that is kept on-site.</i></p>															
<p><b>3. Inventory List</b> List all materials and machinery that are potentially exposed to stormwater.</p> <table border="1"> <thead> <tr> <th>Materials</th> <th>Machinery/Equipment</th> </tr> </thead> <tbody> <tr> <td>Compost</td> <td>Scarab</td> </tr> <tr> <td></td> <td>Plows</td> </tr> <tr> <td></td> <td>Lowboy trailer</td> </tr> <tr> <td></td> <td>Truck bodies</td> </tr> <tr> <td></td> <td>Tractor</td> </tr> <tr> <td></td> <td></td> </tr> </tbody> </table>		Materials	Machinery/Equipment	Compost	Scarab		Plows		Lowboy trailer		Truck bodies		Tractor		
Materials	Machinery/Equipment														
Compost	Scarab														
	Plows														
	Lowboy trailer														
	Truck bodies														
	Tractor														

<p><b>4. Discharge of Stormwater from Secondary Containment</b> Describe the process in place for discharging stormwater from secondary containment areas where outdoor containers are stored.</p>
<p><i>Not applicable. No outdoor containers or secondary containment are kept at Compost Facility.</i></p>
<p><b>5. Fueling Operations</b> Does fueling occur on site? If so, describe the BMPs in place to minimize contamination of stormwater from fueling activities. If not, explain where fueling takes place.</p>
<p><i>Not applicable. No fueling operations occur at the Compost Facility.</i></p>
<p><b>6. Vehicle/Equipment Maintenance and Repair</b> Do you perform maintenance and repair on site? Is this conducted indoors or outdoors? If outdoors, describe the BMPs in place to minimize contamination of stormwater from maintenance and repair activities.</p>
<p><i>Not applicable. No maintenance or repairs are performed at the Compost Facility.</i></p>
<p><b>7. Wash Wastewater Containment</b> Do you wash vehicles on site? If so, describe the BMPs in place to minimize contamination of stormwater from these activities. Note that on site containment structures require annual inspections by a NJ licensed professional engineer. If not, explain where vehicle washing takes place.</p>
<p><i>Not applicable. No vehicle washing is conducted on site. Vehicles are washed at the Monmouth County Reclamation Center Vehicle Wash Facility.</i></p>
<p><b>8. Salt and Other Granular De-icing Materials</b> Do you store salt and other granular deicing materials on site? If so, describe how they are stored and the BMPs in place to minimize contamination of stormwater from these materials. If not, explain where these materials are stored.</p>
<p><i>Not applicable. No salt or other granular deicing materials are stored at the Compost Facility.</i></p>

<p><b>9. Aggregate Material, Wood Chips, and Finished Leaf Compost</b> Do you store these materials on site? If so, describe how they are stored and the BMPs in place to minimize contamination of stormwater from these materials. If not, explain where these materials are stored.</p>
<p><i>Compost is stored at the Compost Facility. The compost is stored at least 50 feet away from surface water bodies, storm sewer inlets, and ditches. The compost pile and surrounding location is graded in such a way to minimize stormwater run-on and pollutant run-off.</i></p>
<p><b>10. Cold Patch Asphalt</b> Do you store these materials on site? If so, describe how they are stored and the BMPs in place to minimize contamination of stormwater from these materials. If not, explain where these materials are stored.</p>
<p><i>Not applicable. No cold patch asphalt is stored at the Compost Facility.</i></p>
<p><b>11. Street Sweepings and Storm Sewer Cleanout Materials</b> Do you store these materials on site? If so, describe how they are stored and the BMPs in place to minimize contamination of stormwater from these materials. If not, explain where these materials are stored.</p>
<p><i>Street sweepings and catch basin clean out materials are collected and disposed of at the Monmouth County Reclamation Center.</i></p>
<p><b>12. Construction and Demolition Waste, Wood Waste, and Yard Trimmings</b> Do you store these materials on site? If so, describe how they are stored and the BMPs in place to minimize contamination of stormwater from these materials. If not, explain where these materials are stored.</p>
<p><i>Not applicable. No construction and demolition waste, wood waste, or yard trimmings are stored at the Compost Facility.</i></p>
<p><b>13. Scrap Tires</b> Do you store these materials on site? If so, describe how they are stored and the BMPs in place to minimize contamination of stormwater from these materials. If not, explain where these materials are stored.</p>
<p><i>Not applicable. No scrap tires are stored at the Compost Facility.</i></p>



**14. Inoperable Vehicles and Equipment**

Do you store inoperable vehicles or equipment on site? If so, describe how they are stored and the BMPs in place to minimize contamination of stormwater. If not, explain where they are stored.

*Inoperable vehicles are stored outdoors at the Compost Facility. These are stored away from any nearby inlets and are visually inspected to ensure nothing is leaking from the vehicles.*

**1. Site Name and Address**

*The Township of Ocean Copper Roof Building is located in Joe Palaia Park.*

**2. Monthly Site Inspections**

Describe the nature of inspections conducted at this site and the location of inspection logs.

*DPW staff conduct monthly inspections of the entire site to identify conditions that may contribute stormwater contaminants or otherwise negatively impact the MS4. Findings are documented in an inspection log that is kept on-site.*

**3. Inventory List**

List all materials and machinery that are potentially exposed to stormwater.

**Materials**

*Paper products*

*Christmas decorations*

**Machinery/Equipment****4. Discharge of Stormwater from Secondary Containment**

Describe the process in place for discharging stormwater from secondary containment areas where outdoor containers are stored.

*Not applicable. No outdoor containers or secondary containment are kept at the Copper Roof Building.*

**5. Fueling Operations**

Does fueling occur on site? If so, describe the BMPs in place to minimize contamination of stormwater from fueling activities. If not, explain where fueling takes place.

*Not applicable. No fueling operations occur at the Copper Roof Building.*



<p><b>6. Vehicle/Equipment Maintenance and Repair</b> Do you perform maintenance and repair on site? Is this conducted indoors or outdoors? If outdoors, describe the BMPs in place to minimize contamination of stormwater from maintenance and repair activities.</p>
<p><i>Not applicable. No maintenance or repairs are performed at the Copper Roof Building.</i></p>
<p><b>7. Wash Wastewater Containment</b> Do you wash vehicles on site? If so, describe the BMPs in place to minimize contamination of stormwater from these activities. Note that on site containment structures require annual inspections by a NJ licensed professional engineer. If not, explain where vehicle washing takes place.</p>
<p><i>Not applicable. No vehicle washing is conducted on site. Vehicles are washed at the Monmouth County Reclamation Center Vehicle Wash Facility.</i></p>
<p><b>8. Salt and Other Granular De-icing Materials</b> Do you store salt and other granular deicing materials on site? If so, describe how they are stored and the BMPs in place to minimize contamination of stormwater from these materials. If not, explain where these materials are stored.</p>
<p><i>Not applicable. No salt or other granular deicing materials are stored at the Copper Roof Building.</i></p>
<p><b>9. Aggregate Material, Wood Chips, and Finished Leaf Compost</b> Do you store these materials on site? If so, describe how they are stored and the BMPs in place to minimize contamination of stormwater from these materials. If not, explain where these materials are stored.</p>
<p><i>Not applicable. No aggregate material, wood chips, or finished leaf compost is stored at the Copper Roof Building.</i></p>
<p><b>10. Cold Patch Asphalt</b> Do you store these materials on site? If so, describe how they are stored and the BMPs in place to minimize contamination of stormwater from these materials. If not, explain where these materials are stored.</p>
<p><i>Not applicable. No cold patch asphalt is stored at the Copper Roof Building.</i></p>

<p><b>11. Street Sweepings and Storm Sewer Cleanout Materials</b> Do you store these materials on site? If so, describe how they are stored and the BMPs in place to minimize contamination of stormwater from these materials. If not, explain where these materials are stored.</p>
<p><i>Street sweepings and catch basin clean out materials are collected and disposed of at the Monmouth County Reclamation Center.</i></p>
<p><b>12. Construction and Demolition Waste, Wood Waste, and Yard Trimmings</b> Do you store these materials on site? If so, describe how they are stored and the BMPs in place to minimize contamination of stormwater from these materials. If not, explain where these materials are stored.</p>
<p><i>Not applicable. No construction and demolition waste, wood waste, or yard trimmings are stored at the Copper Roof Building.</i></p>
<p><b>13. Scrap Tires</b> Do you store these materials on site? If so, describe how they are stored and the BMPs in place to minimize contamination of stormwater from these materials. If not, explain where these materials are stored.</p>
<p><i>Not applicable. No scrap tires are stored at the Copper Roof Building.</i></p>
<p><b>14. Inoperable Vehicles and Equipment</b> Do you store inoperable vehicles or equipment on site? If so, describe how they are stored and the BMPs in place to minimize contamination of stormwater. If not, explain where they are stored.</p>
<p><i>Not applicable. No inoperable vehicles or equipment are stored at the Copper Roof Building.</i></p>

<p><b>1. Site Name and Address</b></p>
<p><i>The Township of Ocean Building and Grounds at Joe Palaia Park is located in Joe Palaia Park.</i></p>
<p><b>2. Monthly Site Inspections</b> Describe the nature of inspections conducted at this site and the location of inspection logs.</p>
<p><i>DPW staff conduct monthly inspections of the entire site to identify conditions that may contribute stormwater contaminants or otherwise negatively impact the MS4. Findings are documented in an inspection log that is kept on-site.</i></p>

<b>3. Inventory List</b> List all materials and machinery that are potentially exposed to stormwater.	
<b>Materials</b>	<b>Machinery/Equipment</b>
<i>Signs</i>	<i>Golf cart</i>
<i>Paint</i>	<i>Utility vehicle</i>
	<i>Tractor</i>
	<i>Lawn mowing equipment</i>
<b>4. Discharge of Stormwater from Secondary Containment</b> Describe the process in place for discharging stormwater from secondary containment areas where outdoor containers are stored.	
<i>Not applicable. No outdoor containers or secondary containment are kept at the Building and Grounds at Joe Palaia Park.</i>	
<b>5. Fueling Operations</b> Does fueling occur on site? If so, describe the BMPs in place to minimize contamination of stormwater from fueling activities. If not, explain where fueling takes place.	
<i>Not applicable. No fueling operations occur at the Building and Grounds at Joe Palaia Park.</i>	
<b>6. Vehicle/Equipment Maintenance and Repair</b> Do you perform maintenance and repair on site? Is this conducted indoors or outdoors? If outdoors, describe the BMPs in place to minimize contamination of stormwater from maintenance and repair activities.	
<i>Not applicable. No maintenance or repairs are performed at the Building and Grounds at Joe Palaia Park.</i>	
<b>7. Wash Wastewater Containment</b> Do you wash vehicles on site? If so, describe the BMPs in place to minimize contamination of stormwater from these activities. Note that on site containment structures require annual inspections by a NJ licensed professional engineer. If not, explain where vehicle washing takes place.	
<i>Not applicable. No vehicle washing is conducted on site. Vehicles are washed at the Monmouth County Reclamation Center Vehicle Wash Facility.</i>	



<p><b>8. Salt and Other Granular De-icing Materials</b> Do you store salt and other granular deicing materials on site? If so, describe how they are stored and the BMPs in place to minimize contamination of stormwater from these materials. If not, explain where these materials are stored.</p>
<p><i>Not applicable. No salt or other granular deicing materials are stored at the Building and Grounds at Joe Palaia Park.</i></p>
<p><b>9. Aggregate Material, Wood Chips, and Finished Leaf Compost</b> Do you store these materials on site? If so, describe how they are stored and the BMPs in place to minimize contamination of stormwater from these materials. If not, explain where these materials are stored.</p>
<p><i>Not applicable. No aggregate material, wood chips, or finished leaf compost is stored at the Building and Grounds at Joe Palaia Park.</i></p>
<p><b>10. Cold Patch Asphalt</b> Do you store these materials on site? If so, describe how they are stored and the BMPs in place to minimize contamination of stormwater from these materials. If not, explain where these materials are stored.</p>
<p><i>Not applicable. No cold patch asphalt is stored at the Building and Grounds at Joe Palaia Park.</i></p>
<p><b>11. Street Sweepings and Storm Sewer Cleanout Materials</b> Do you store these materials on site? If so, describe how they are stored and the BMPs in place to minimize contamination of stormwater from these materials. If not, explain where these materials are stored.</p>
<p><i>Street sweepings and catch basin clean out materials are collected and disposed of at the Monmouth County Reclamation Center.</i></p>
<p><b>12. Construction and Demolition Waste, Wood Waste, and Yard Trimmings</b> Do you store these materials on site? If so, describe how they are stored and the BMPs in place to minimize contamination of stormwater from these materials. If not, explain where these materials are stored.</p>
<p><i>Not applicable. No construction and demolition waste, wood waste, or yard trimmings are stored at the Building and Grounds at Joe Palaia Park.</i></p>



<p><b>13. Scrap Tires</b> Do you store these materials on site? If so, describe how they are stored and the BMPs in place to minimize contamination of stormwater from these materials. If not, explain where these materials are stored.</p>
<p><i>Not applicable. No scrap tires are stored at the Building and Grounds at Joe Palaia Park.</i></p>
<p><b>14. Inoperable Vehicles and Equipment</b> Do you store inoperable vehicles or equipment on site? If so, describe how they are stored and the BMPs in place to minimize contamination of stormwater. If not, explain where they are stored.</p>
<p><i>Not applicable. No inoperable vehicles or equipment are stored at the Building and Grounds at Joe Palaia Park.</i></p>

<p><b>1. Site Name and Address</b></p>	
<p><i>The Township of Ocean Cablevision Building is located in Joe Palaia Park.</i></p>	
<p><b>2. Monthly Site Inspections</b> Describe the nature of inspections conducted at this site and the location of inspection logs.</p>	
<p><i>DPW staff conduct monthly inspections of the entire site to identify conditions that may contribute stormwater contaminants or otherwise negatively impact the MS4. Findings are documented in an inspection log that is kept on-site.</i></p>	
<p><b>3. Inventory List</b> List all materials and machinery that are potentially exposed to stormwater.</p>	
<b>Materials</b>	<b>Machinery/Equipment</b>
<i>Tools for assembling trash &amp; recycling cans</i>	<i>Pickup truck</i>
<i>Trash &amp; recycling cans</i>	
<p><b>4. Discharge of Stormwater from Secondary Containment</b> Describe the process in place for discharging stormwater from secondary containment areas where outdoor containers are stored.</p>	
<p><i>Not applicable. No outdoor containers or secondary containment are kept at the Cablevision Building.</i></p>	

<p><b>5. Fueling Operations</b> Does fueling occur on site? If so, describe the BMPs in place to minimize contamination of stormwater from fueling activities. If not, explain where fueling takes place.</p>
<p><i>Not applicable. No fueling operations occur at the Cablevision Building.</i></p>
<p><b>6. Vehicle/Equipment Maintenance and Repair</b> Do you perform maintenance and repair on site? Is this conducted indoors or outdoors? If outdoors, describe the BMPs in place to minimize contamination of stormwater from maintenance and repair activities.</p>
<p><i>Not applicable. No maintenance or repairs are performed at the Cablevision Building.</i></p>
<p><b>7. Wash Wastewater Containment</b> Do you wash vehicles on site? If so, describe the BMPs in place to minimize contamination of stormwater from these activities. Note that on site containment structures require annual inspections by a NJ licensed professional engineer. If not, explain where vehicle washing takes place.</p>
<p><i>Not applicable. No vehicle washing is conducted on site. Vehicles are washed at the Monmouth County Reclamation Center Vehicle Wash Facility.</i></p>
<p><b>8. Salt and Other Granular De-icing Materials</b> Do you store salt and other granular deicing materials on site? If so, describe how they are stored and the BMPs in place to minimize contamination of stormwater from these materials. If not, explain where these materials are stored.</p>
<p><i>Not applicable. No salt or other granular deicing materials are stored at the Cablevision Building.</i></p>
<p><b>9. Aggregate Material, Wood Chips, and Finished Leaf Compost</b> Do you store these materials on site? If so, describe how they are stored and the BMPs in place to minimize contamination of stormwater from these materials. If not, explain where these materials are stored.</p>
<p><i>Not applicable. No aggregate material, wood chips, or finished leaf compost is stored at the Cablevision Building.</i></p>
<p><b>10. Cold Patch Asphalt</b> Do you store these materials on site? If so, describe how they are stored and the BMPs in place to minimize contamination of stormwater from these materials. If not, explain where these materials are stored.</p>
<p><i>Not applicable. No cold patch asphalt is stored at the Cablevision Building.</i></p>

<p><b>11. Street Sweepings and Storm Sewer Cleanout Materials</b> Do you store these materials on site? If so, describe how they are stored and the BMPs in place to minimize contamination of stormwater from these materials. If not, explain where these materials are stored.</p>
<p><i>Street sweepings and catch basin clean out materials are collected and disposed of at the Monmouth County Reclamation Center.</i></p>
<p><b>12. Construction and Demolition Waste, Wood Waste, and Yard Trimmings</b> Do you store these materials on site? If so, describe how they are stored and the BMPs in place to minimize contamination of stormwater from these materials. If not, explain where these materials are stored.</p>
<p><i>Not applicable. No construction and demolition waste, wood waste, or yard trimmings are stored at the Cablevision Building.</i></p>
<p><b>13. Scrap Tires</b> Do you store these materials on site? If so, describe how they are stored and the BMPs in place to minimize contamination of stormwater from these materials. If not, explain where these materials are stored.</p>
<p><i>Not applicable. No scrap tires are stored at the Cablevision Building.</i></p>
<p><b>14. Inoperable Vehicles and Equipment</b> Do you store inoperable vehicles or equipment on site? If so, describe how they are stored and the BMPs in place to minimize contamination of stormwater. If not, explain where they are stored.</p>
<p><i>Not applicable. No inoperable vehicles or equipment are stored at the Cablevision Building.</i></p>



## Form 10 – Training

### Part IV.F.6-10.

<b>Stormwater Program Coordinators</b>
Describe the training provided for the municipal Stormwater Program Coordinator.
<p><i>The Stormwater Program Coordinator (SPC) will receive the required NJDEP training for SPC responsibilities by January 1, 2026 and once per permit cycle thereafter.</i></p>

Topic	Municipal Employees
Examples: in-person or virtual group sessions, e-Learning, field trainings, and videos	
Describe the training provided for municipal staff.	
SPPP	<i>Annual training will be provided to appropriate municipal staff on the current SPPP and applicable recordkeeping requirements through in-person and/or virtual training sessions.</i>
Construction Site Stormwater Runoff	<i>The Construction Official will receive the proper NJDEP training to determine if a general or individual Construction Site Stormwater Runoff permit is required at a construction site.</i>
Post-Construction Stormwater Management in New and Redevelopment	<i>Not applicable. The Township Engineer's office reviews and inspects all new development and redevelopment projects in Ocean Township.</i>
Community-wide Ordinances	<i>Annual training is provided to appropriate municipal staff on the stormwater related ordinances. The training includes a review of the requirements, enforcement, and the repercussions of non-compliance and will be through in-person and/or virtual training sessions.</i>
Community-wide Measures	<i>Annual training is provided to municipal staff that implement community-wide pollution prevention measures and good housekeeping measures to control solid and floatable materials. The training will be through in-person and/or virtual training sessions.</i>



Stormwater Facilities Maintenance	<i>Annual training is provided to municipal staff involved with the inspection, maintenance, and repair of Township owned or operated stormwater infrastructure. The training will be through in-person and/or virtual training sessions.</i>
Municipal Maintenance Yards and Other Ancillary Operations	<i>Annual training will be provided to appropriate municipal staff on implementing BMPs, good housekeeping measures, and conducting and documenting site inspections at the Municipal Maintenance Yard. The training will be through in-person and/or virtual training sessions.</i>
MS4 Mapping	<i>Not applicable. Staff from the Township Engineer's office will collect stormwater infrastructure GPS points and associated attributes that will be used to create the Ocean Township Stormwater Infrastructure Map.</i>
Outfall Stream Scouring	<i>Annual training will be provided to municipal staff that inspect stormwater outfalls for stream scouring. The training will cover inspection, identification, correction, and documentation of outfall pipe stream scouring and contributing factors through in-person and/or virtual training sessions.</i>
Illicit Discharge Detection and Elimination	<i>Annual training will be provided to municipal staff that inspect stormwater outfalls for illicit discharges. The training will cover identification, elimination, and documentation of illicit discharges through in-person and/or virtual training sessions.</i>
Watershed Improvement Plan	<i>Not applicable. Staff from the Township Engineer's office will work toward completing each phase of the Watershed Improvement Plan, including mapping for the Watershed Inventory Report and implementing semi-annual public information sessions.</i>

<b>Stormwater Management Design Reviewers</b>
Describe the training provided for individuals responsible for reviews and approvals of stormwater management designs.
<i>All individuals that review and approve stormwater management designs for major development projects in Ocean Township must complete the NJDEP Stormwater Management Design Review training course at a minimum of once every 5 years.</i>

<b>Municipal Board and Governing Body Members</b>
Describe the training provided for members of the planning/zoning board and municipal council.
<p><i>Within 6 months of taking office members of the Ocean Township Planning Board and members of the Ocean Township Council will complete the “Asking the Right Questions in Stormwater Review” online training tool provided by NJDEP at <a href="https://dep.nj.gov/stormwater/stormwater-training/">https://dep.nj.gov/stormwater/stormwater-training/</a>.</i></p> <p><i>Once per term of service thereafter, members of the Ocean Township Planning Board and members of the Ocean Township Council will review at least one of the training tools offered under Post-Construction Stormwater Management found at: <a href="https://dep.nj.gov/stormwater/stormwater-training/">https://dep.nj.gov/stormwater/stormwater-training/</a>.</i></p>

<b>Training Records</b>
Indicate the location of training records for the above required training.
<p><i>Training records for members of the Ocean Township Council, the Ocean Township Planning Board, and of all other individuals responsible for implementation of the stormwater program are kept on file in the Township Clerk’s office and Planning Board Secretary’s office.</i></p> <p><i>Training records associated with Ocean Township Department of Public Works stormwater trainings are kept on file at the Public Works Office at 390 Beecroft Place and online through ShareDrive on Township computers.</i></p> <p><i>These records are kept on file for a minimum of five (5) years in their respective locations.</i></p>

## Form 11 – MS4 Mapping

### Part IV.G.1.

1. Provide a link to the most current MS4 outfall/infrastructure map.	
<p><i>The Ocean Township Stormwater Infrastructure map is posted on the municipal webpage at:</i>  <a href="https://www.oceantwp.org/p/stormwater-management-information">https://www.oceantwp.org/p/stormwater-management-information</a></p>	
2. Indicate the total of each type of MS4 infrastructure listed below (due 01 Jan 2026).	
a. MS4 outfalls	248
b. MS4 ground water discharge points (basins or overland flow infiltration areas)	0
c. MS4 interconnections	0
d. MS4 storm drain inlets	3313
e. MS4 manholes	543
f. Length of conveyance (channels, pipes, ditches, etc.)	63 miles
g. MS4 pump stations	0
h. MS4 stormwater facilities (any that are not listed above)	3
i. Maintenance yard(s) and other ancillary operations	4
3. Describe how the municipality's outfall/infrastructure map is reviewed and updated to reflect any new or newly identified MS4 infrastructure (e.g., an outfall is closed, a new basin is constructed, ownership of an outfall has changed, etc.).	
<p><i>Before the end of each year, the Township Engineer's office reviews the current Stormwater Infrastructure Map for accuracy. Map revisions are made if there are new or newly identified MS4 infrastructure or any other significant changes.</i></p>	
4. Describe how the municipality will create and update its MS4 Infrastructure Map.	
<p><i>Staff from the Township Engineer's office will collect GPS points and associated attributes for all Township owned or operated MS4 infrastructure. The data collected will be used to create a Stormwater Infrastructure Map for Ocean Township.</i></p> <p><i>The final Stormwater Infrastructure Map will be submitted electronically to NJDEP as a georeferenced shapefile on or before January 1, 2026. The approved Stormwater Infrastructure Map will be posted on the Township's stormwater webpage and included as a weblink within the SPPP. The MS4 Infrastructure Map will be reviewed and updated annually or more frequently if necessary.</i></p>	



## Form 12 – Watershed Improvement Plan

### Part IV.H.

1. Describe how your municipality is developing its Watershed Improvement Plan.
<i>Staff from the Township Engineer's office are in the process of collecting the requisite data for the Watershed Inventory Report. The Watershed Inventory Report is Phase 1 of the Watershed Improvement Plan and will be submitted to NJDEP on or before January 1, 2026. The approved Watershed Inventory Report will be posted on the Township's stormwater webpage.</i>
2. Describe any regional projects or collaboration efforts with other municipalities.
<i>Ocean Township is a charter member of the Deal Lake Commission (DLC) and is committed to the DLC's goal of improving water quality in Deal Lake and its tributaries. The DLC has a number of ongoing water quality projects in the Deal Lake watershed that can be viewed under Plans/Projects on the DLC website at <a href="https://deallake.org">https://deallake.org</a>.</i>
3. Indicate the location of records related to all public information sessions and meetings for discussions of the Watershed Improvement Plan.
<i>All records related to Watershed Improvement Plan public information sessions and meetings will be kept on file in the Township Clerk's office as well as the Township's stormwater webpage.</i>  <i>These records will be kept on file for a minimum of five (5) years.</i>